

**Bethany Kempf**



## **THE CAMERON at OAKMONT**

**THE CAMERON - FARMHOUSE MODERN**

**3 Bedrooms • 2 Bathrooms • 3-Car Garage • 2,740 ft<sup>2</sup> Living Area • 3,658 ft<sup>2</sup> Under Roof**

The Cameron is a 2,624 sq. ft. home that blends style and functionality. With 3 bedrooms, 2 baths, and a three-car garage, this single-story layout offers open living areas and private retreats. The deluxe kitchen flows into a spacious living room and a bright sunroom, ideal for relaxing or entertaining. The master suite is a private retreat with a spa-inspired bath and a walk-in closet. Bedrooms 2 and 3 share a full bath, offering comfort for family or guests. With ICI Homes' customization options, the Cameron can be tailored to suit your lifestyle perfectly.

**Bethany Kempf**

ICI Homes -

[bkempf@icihomes.com](mailto:bkempf@icihomes.com)

\* Renderings may vary from actual home. Please see disclaimer for more details.

# THE CAMERON

3 Bedrooms • 2 Bathrooms • 3-Car Garage

Oakmont  
Gainesville, FL

Available In  
Oakmont 80

Living Area: 2,740 ft<sup>2</sup> Under Roof: 3,658 ft<sup>2</sup>

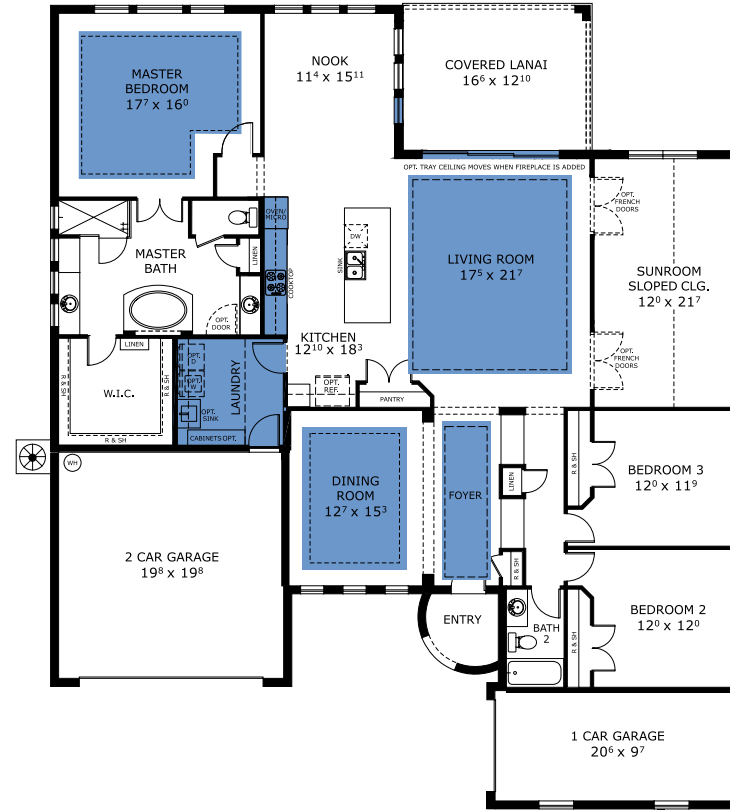
## THE FARMHOUSE



## THE CRAFTSMAN



## FIRST FLOOR



©1994-2026 ICI Homes™ is a registered trademark whose divisions operate under CBC1267313, CBC1262114, CBC1262120, CBC1264300, CBC1265743, CRC1333091, and CBC1257263. Features may be plan specific and vary. Please consult a Sales Associate for specific feature information. All new ICI Homes come with a HBW 2-10 warranty. Certain elevations may have additional fees. Prices may not include lot premiums, upgrades, and options. Inventory home completion date may vary. All prices subject to change without notice. All plans are property of ICI Homes and cannot be copied or used without permission. Prices, promotions, incentives, features, options, amenities, floor plans, elevations, site maps, designs, materials, and dimensions are for illustrative purposes only and subject to change without notice. Plans should not be relied upon as representation express or implied of final sizes, locations, features or dimensions. Square footage and dimensions are estimated and may vary from description. All HERS ratings and savings are calculated by a third party energy rating service. Actual savings will depend on a number of factors, including but not limited to daily activities, home maintenance practices, household size, use of appliances, lighting and internal climate control systems, lot orientation, and surrounding climate and weather conditions. Created on 04/05/2026: \_\_\_\_\_ Garage Orientation R / L: \_\_\_\_\_

