



Bethany Kempf



## THE DUVAL at SEVEN PINES

THE DUVAL - COASTAL

**4 Bedrooms • 3 Bathrooms • 3-Car Garage • 2,665 ft<sup>2</sup> Living Area • 3,814 ft<sup>2</sup> Under Roof**

The Duval is a spacious 2,665-square-foot home that offers four bedrooms and three baths in a beautifully open and functional layout. The heart of the home is a large living area that connects the deluxe kitchen, dining area, and extended covered lanai—ideal for both entertaining and everyday life. The luxurious master suite, with its walk-in closet and spa-like bath, serves as a private retreat, while three additional bedrooms provide flexibility for family and guests. With ICI Homes' customization options, the Duval can be tailored to reflect your unique lifestyle and needs.

**Bethany Kempf**  
ICI Homes -  
[bkempf@icihomes.com](mailto:bkempf@icihomes.com)

\* Renderings may vary from actual home. Please see disclaimer for more details.

# THE DUVAL

4 Bedrooms • 3 Bathrooms • 3-Car Garage

Seven Pines  
Jacksonville, FL

Available In  
Seven Pines 60 RL

Living Area: 2,665 ft<sup>2</sup> Under Roof: 3,814 ft<sup>2</sup>

## THE FARMHOUSE



## THE COLONIAL



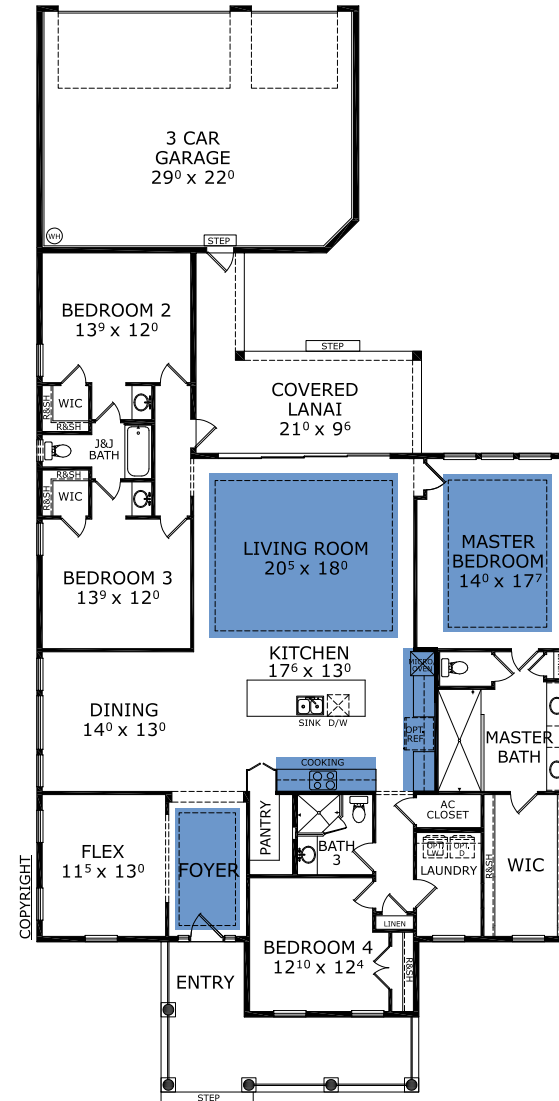
## THE WEST INDIES



## THE FRENCH QUARTER



## FIRST FLOOR



©1994-2026 ICI Homes™ is a registered trademark whose divisions operate under CBC1267313, CBC1262114, CBC1262120, CBC1264300, CBC1265743, CRC1333091, and CBC1257263. Features may be plan specific and vary. Please consult a Sales Associate for specific feature information. All new ICI Homes come with a HBW 2-10 warranty. Certain elevations may have additional fees. Prices may not include lot premiums, upgrades, and options. Inventory home completion date may vary. All prices subject to change without notice. All plans are property of ICI Homes and cannot be copied or used without permission. Prices, promotions, incentives, features, options, amenities, floor plans, elevations, site maps, designs, materials, and dimensions are for illustrative purposes only and subject to change without notice. Plans should not be relied upon as representation express or implied of final sizes, locations, features or dimensions. Square footage and dimensions are estimated and may vary from description. All HERS ratings and savings are calculated by a third party energy rating service. Actual savings will depend on a number of factors, including but not limited to daily activities, home maintenance practices, household size, use of appliances, lighting and internal climate control systems, lot orientation, and surrounding climate and weather conditions. Created on 04/05/2026: \_\_\_\_\_ Garage Orientation R / L: \_\_\_\_\_

