



Bethany Kempf



THE ELKTON - E at NOCATEE

3 Bedrooms • 2.5 Bathrooms • 2-Car Garage • 1,815 ft² Living Area • 2,367 ft² Under Roof

The Elkton is a beautifully designed 1,815-square-foot home with three bedrooms, two and a half baths, and a two-car garage. The first floor features two bedrooms and a flexible retreat area, perfect for a playroom or home office. Upstairs, an open-concept layout combines the kitchen, dining, and living areas, with a private balcony for added light and relaxation. The spacious master suite offers a luxurious bath and large walk-in closet. With ICI Homes' customization options, you can tailor the Elkton to your needs, ensuring every detail fits your lifestyle.

* Renderings may vary from actual home. Please see disclaimer for more details.

THE ELKTON - FARMHOUSE

Bethany Kempf

ICI Homes -

bkempf@icihomes.com

THE ELKTON - E

3 Bedrooms • 2.5 Bathrooms • 2-Car Garage

Nocatee
Ponte Vedra, FL

Available In
West End Townhomes

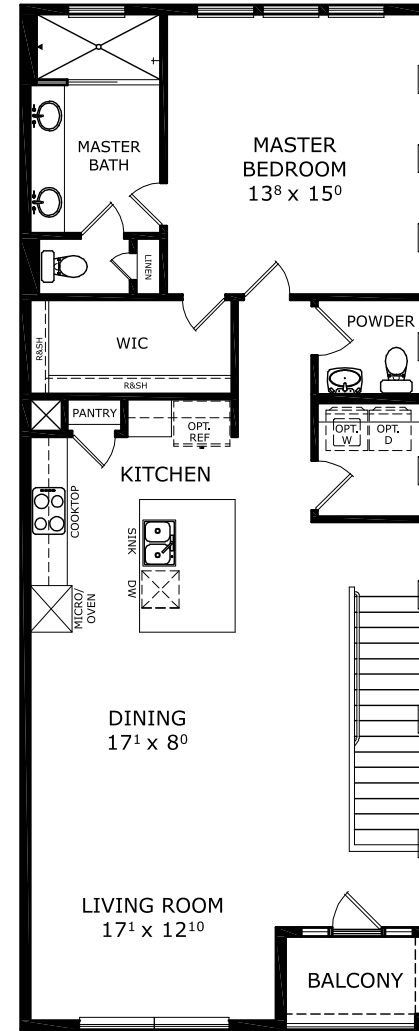
Living Area: 1,815 ft² **Under Roof:** 2,367 ft²

THE WEST INDIES



COPYRIGHT

FIRST-SECOND FLOOR



©1994-2026 ICI Homes™ is a registered trademark whose divisions operate under CBC1267313, CBC1262114, CBC1262120, CBC1264300, CBC1265743, CRC1333091, and CBC1257263. Features may be plan specific and vary. Please consult a Sales Associate for specific feature information. All new ICI Homes come with a HBW 2-10 warranty. Certain elevations may have additional fees. Prices may not include lot premiums, upgrades, and options. Inventory home completion date may vary. All prices subject to change without notice. All plans are property of ICI Homes and cannot be copied or used without permission. Prices, promotions, incentives, features, options, amenities, floor plans, elevations, site maps, designs, materials, and dimensions are for illustrative purposes only and subject to change without notice. Plans should not be relied upon as representation express or implied of final sizes, locations, features or dimensions. Square footage and dimensions are estimated and may vary from description. All HERS ratings and savings are calculated by a third party energy rating service. Actual savings will depend on a number of factors, including but not limited to daily activities, home maintenance practices, household size, use of appliances, lighting and internal climate control systems, lot orientation, and surrounding climate and weather conditions. Created on 04/05/2026: _____ Garage Orientation R / L: _____

