



Bethany Kempf



THE HIDEAWAY at VOLUSIA/FLAGLER OFFSITE

THE HIDEAWAY - COASTAL

3 Bedrooms • 3 Bathrooms • 2-Car Garage • 3,051 ft² Living Area • 4,920 ft² Under Roof

The Hideaway floor plan offers 3,051 square feet of versatile living across three stories, with three bedrooms, three baths, and a two-car garage. The first floor features a spacious flex room opening to a large covered lanai, perfect for entertaining. The second floor's open-concept living area includes a large kitchen, living room, dining room, and multiple balconies. The third floor hosts the master suite with a private balcony, en-suite bath, and walk-in closet, along with two additional bedrooms. With ICI Homes' customization options, you can tailor the Hideaway to suit your unique lifestyle.

Bethany Kempf

ICI Homes -

bkempf@icihomes.com

* Renderings may vary from actual home. Please see disclaimer for more details.

THE HIDEAWAY

3 Bedrooms • 3 Bathrooms • 2-Car Garage

Volusia/Flagler

Offsite

Ormond Beach, FL

Available In

Volusia Flagler On Your Lot 2

Living Area: 3,051 ft² Under Roof: 4,920 ft²

THE COASTAL MODERN II



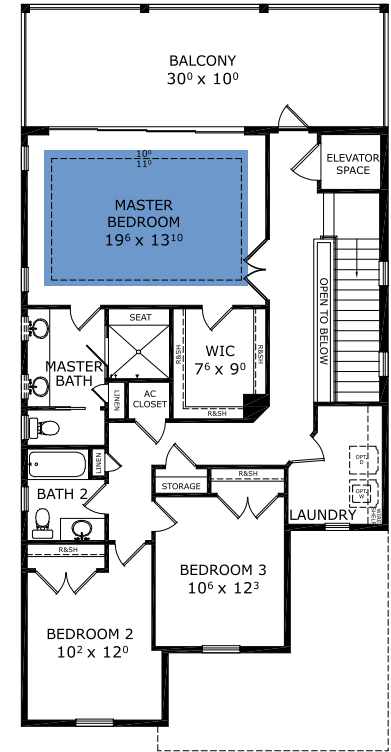
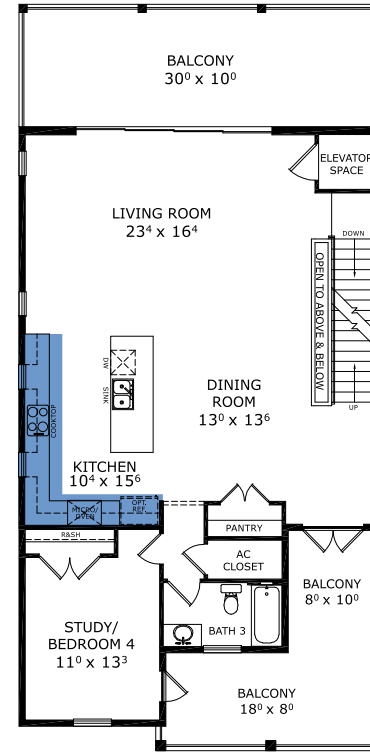
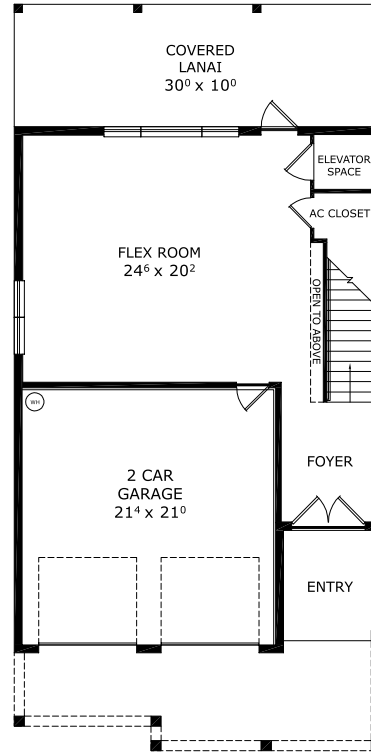
THE COASTAL MODERN



THE CARIBBEAN MODERN



FIRST-THIRD FLOOR



©1994-2026 ICI Homes™ is a registered trademark whose divisions operate under CBC1267313, CBC1262114, CBC1262120, CBC1264300, CBC1265743, CRC1333091, and CBC1257263. Features may be plan specific and vary. Please consult a Sales Associate for specific feature information. All new ICI Homes come with a HBW 2-10 warranty. Certain elevations may have additional fees. Prices may not include lot premiums, upgrades, and options. Inventory home completion date may vary. All prices subject to change without notice. All plans are property of ICI Homes and cannot be copied or used without permission. Prices, promotions, incentives, features, options, amenities, floor plans, elevations, site maps, designs, materials, and dimensions are for illustrative purposes only and subject to change without notice. Plans should not be relied upon as representation express or implied of final sizes, locations, features or dimensions. Square footage and dimensions are estimated and may vary from description. All HERS ratings and savings are calculated by a third party energy rating service. Actual savings will depend on a number of factors, including but not limited to daily activities, home maintenance practices, household size, use of appliances, lighting and internal climate control systems, lot orientation, and surrounding climate and weather conditions. Created on 04/05/2026: _____ Garage Orientation R / L: _____

