



**Bethany Kempf**

13862856073



## **THE AVERY at WOODHAVEN**

THE AVERY - MEDITERRANEAN

**3 Bedrooms • 2 Bathrooms • 2-Car Garage • 1,728 ft<sup>2</sup> Living Area • 2,384 ft<sup>2</sup> Under Roof**

The Avery is a welcoming 3-bedroom, 2-bath home featuring an open-concept layout that balances style with functionality. Enjoy an expansive living area where the living room, deluxe kitchen, and dining space flow effortlessly, perfect for gatherings. A private master suite offers a tranquil retreat, with dual vanities, a walk-in closet, and a spacious shower. The covered lanai, ideal for outdoor relaxation, connects beautifully with the indoor spaces. Plus, with ICI Homes' customization options, from layout changes to additional features, the Avery becomes a home uniquely crafted for your lifestyle.

**Bethany Kempf**

ICI Homes -

13862856073

[bkempf@icihomes.com](mailto:bkempf@icihomes.com)

\* Renderings may vary from actual home. Please see disclaimer for more details.

# THE AVERY

3 Bedrooms • 2 Bathrooms • 2-Car Garage

Woodhaven  
Port Orange, FL

Available In  
Woodhaven 50

Living Area: 1,728 ft<sup>2</sup> Under Roof: 2,384 ft<sup>2</sup>

## THE MODERN



## THE TUSCAN



## THE PALM CREST



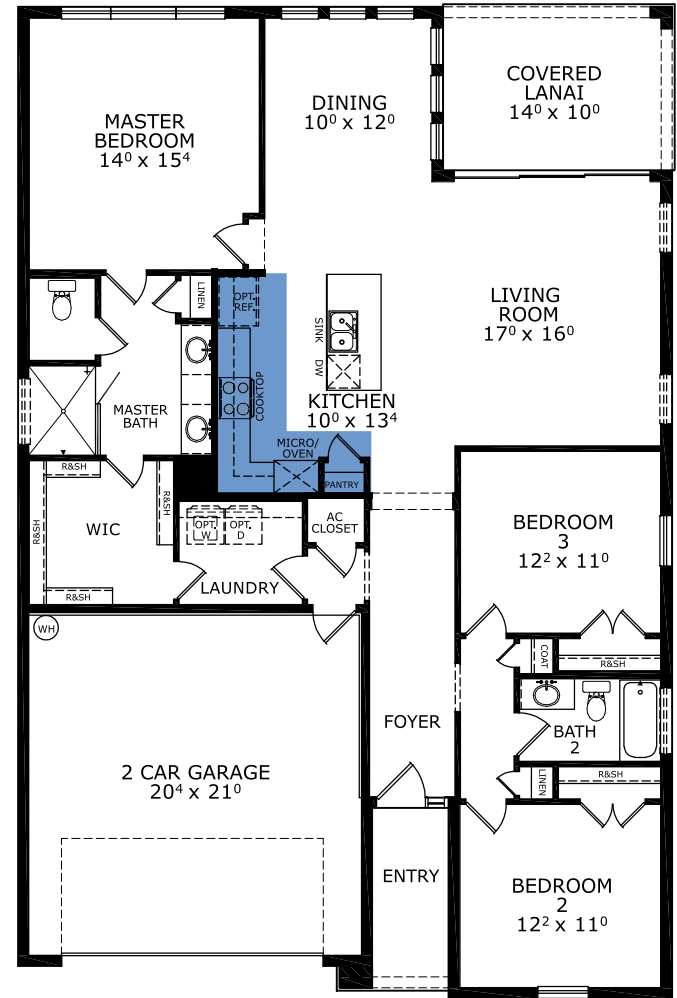
## THE CRAFTSMAN



## THE FARMHOUSE



## FIRST FLOOR



COPYRIGHT

©1994-2026 ICI Homes™ is a registered trademark whose divisions operate under CBC1267313, CBC1262114, CBC1262120, CBC1264300, CBC1265743, CRC1333091, and CBC1257263. Features may be plan specific and vary. Please consult a Sales Associate for specific feature information. All new ICI Homes come with a HBW 2-10 warranty. Certain elevations may have additional fees. Prices may not include lot premiums, upgrades, and options. Inventory home completion date may vary. All prices subject to change without notice. All plans are property of ICI Homes and cannot be copied or used without permission. Prices, promotions, incentives, features, options, amenities, floor plans, elevations, site maps, designs, materials, and dimensions are for illustrative purposes only and subject to change without notice. Plans should not be relied upon as representation express or implied of final sizes, locations, features or dimensions. Square footage and dimensions are estimated and may vary from description. All HERS ratings and savings are calculated by a third party energy rating service. Actual savings will depend on a number of factors, including but not limited to daily activities, home maintenance practices, household size, use of appliances, lighting and internal climate control systems, lot orientation, and surrounding climate and weather conditions. Created on 05/20/2026: \_\_\_\_\_ Garage Orientation R / L: \_\_\_\_\_

