



Bethany Kempf

13862856073



THE KELLI at ORLANDO ON YOUR LAND

THE CRAFTSMAN

4 Bedrooms • 3 Bathrooms • 3-Car Garage • 3,003 ft² Living Area • 4,186 ft² Under Roof

The Kelli floor plan, spanning 3,003 sq. ft., is a single-story layout designed with comfort and functionality in mind. This four-bedroom, three-bath home welcomes you with a spacious foyer and a versatile flex room, ideal as a home office or play area. At its heart, the open-concept living room connects seamlessly to the gourmet kitchen with a large island and hidden pantry. The master suite is a true retreat, featuring a luxurious bath and walk-in closet. With ICI Homes' customization options, personalize spaces like the flex room or extend the lanai to make this home truly yours.

Bethany Kempf

ICI Homes -

13862856073

bkempf@icihomes.com

* Renderings may vary from actual home. Please see disclaimer for more details.

THE KELLI

4 Bedrooms • 3 Bathrooms • 3-Car Garage

Orlando On Your

Land
Orlando, FL

Available In
Orlando On Your Lot

Living Area: 3,003 ft² Under Roof: 4,186 ft²

THE WEST INDIES



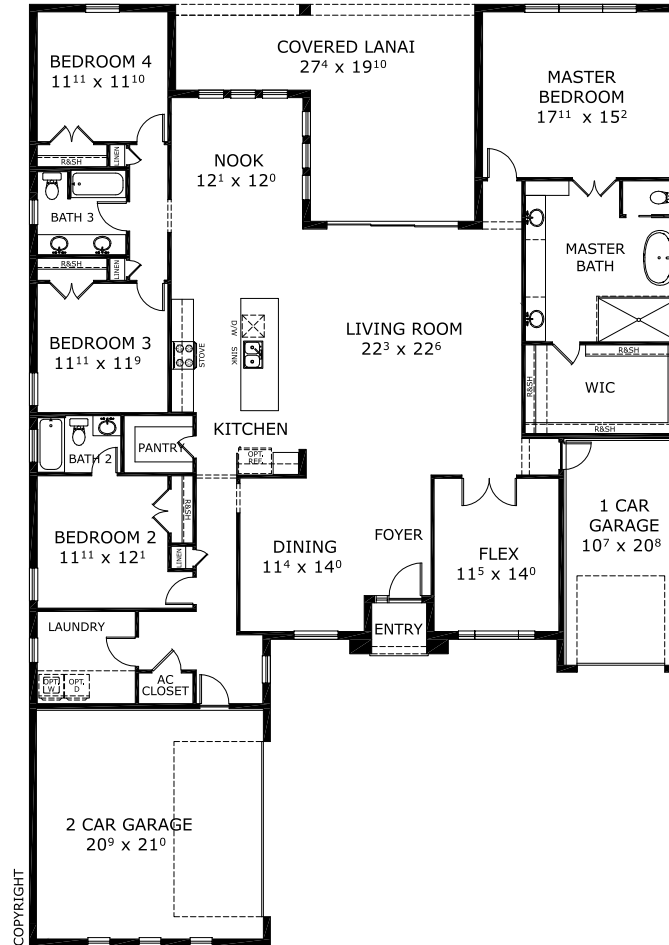
THE MODERN



THE FARMHOUSE



FIRST FLOOR



COPYRIGHT

©1994-2026 ICI Homes™ is a registered trademark whose divisions operate under CBC1267313, CBC1262114, CBC1262120, CBC1264300, CBC1265743, CRC1333091, and CBC1257263. Features may be plan specific and vary. Please consult a Sales Associate for specific feature information. All new ICI Homes come with a HBW 2-10 warranty. Certain elevations may have additional fees. Prices may not include lot premiums, upgrades, and options. Inventory home completion date may vary. All prices subject to change without notice. All plans are property of ICI Homes and cannot be copied or used without permission. Prices, promotions, incentives, features, options, amenities, floor plans, elevations, site maps, designs, materials, and dimensions are for illustrative purposes only and subject to change without notice. Plans should not be relied upon as representation express or implied of final sizes, locations, features or dimensions. Square footage and dimensions are estimated and may vary from description. All HERS ratings and savings are calculated by a third party energy rating service. Actual savings will depend on a number of factors, including but not limited to daily activities, home maintenance practices, household size, use of appliances, lighting and internal climate control systems, lot orientation, and surrounding climate and weather conditions. Created on 05/20/2026: _____ Garage Orientation R / L: _____

