



Bethany Kempf

13862856073



THE VIOLET at OAKMONT

THE COASTAL MODERN

MODEL

3 Bedrooms • 2 Bathrooms • 2-Car Garage • 1,841 ft² Living Area • 2,477 ft² Under Roof

The Violet floor plan is a charming 1,841 sq ft home that blends comfort and style in a thoughtfully designed layout. Featuring three bedrooms, two bathrooms, and a seamless open-concept living area, this home is perfect for both relaxation and entertaining. The gourmet kitchen flows into the dining and living rooms, creating an inviting central space. A private master suite offers a luxurious retreat with dual walk-in closets and a spa-inspired bath. With a covered lanai and ICI Homes' customization options, the Violet can be tailored to your unique lifestyle and preferences.

Bethany Kempf

ICI Homes -

13862856073

bkempf@icihomes.com

* Renderings may vary from actual home. Please see disclaimer for more details.

THE VIOLET

3 Bedrooms • 2 Bathrooms • 2-Car Garage

MODEL

Oakmont

Classic Series | 50' Wide Lots | Rear Load - Lot 691

2600 SW 120TH DR
Gainesville, FL, 32608

Living Area: 1,841 ft²

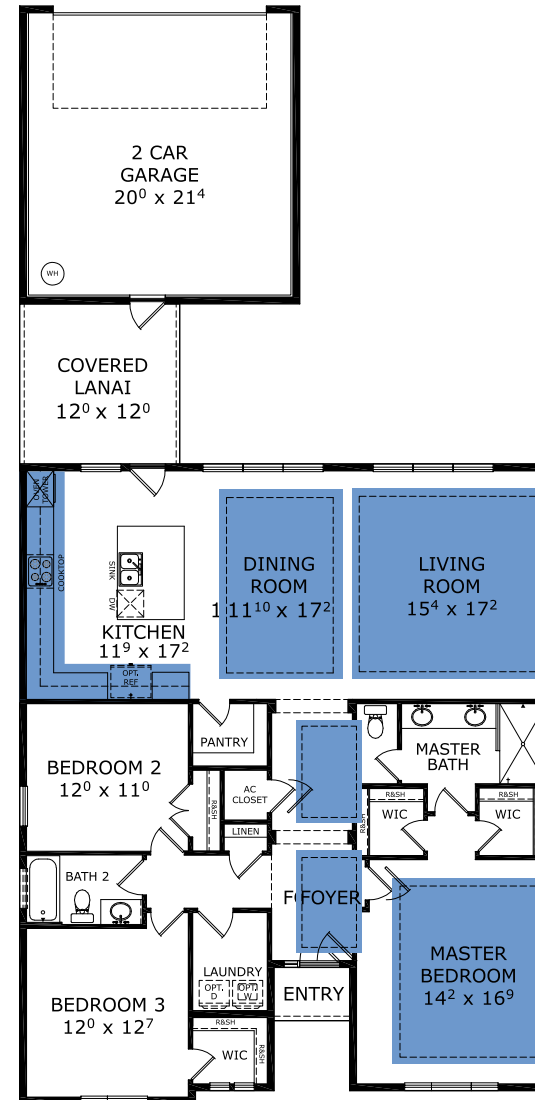
Structural Options Included in This Home:

- ✓ Kitchen Deluxe - NFD
- ✓ Summer Kitchen-Knee Wall Only per LF
- ✓ Tray Ceiling - Dining
- ✓ Tray Ceiling - Foyer
- ✓ Tray Ceiling - Living Room
- ✓ Tray Ceiling - Master Suite
- ✓ Outlet-Floor Plug Brass
- ✓ Model Discount
- ✓ CLARIFICATION - Delete Open Rafter detail on front elevation of home.
- ✓ Enlarged lanai

And much more....

From: **\$498,900**

FIRST FLOOR



©1994-2026 ICI Homes™ is a registered trademark whose divisions operate under CBC1267313, CBC1262114, CBC1262120, CBC1264300, CBC1265743, CRC1333091, and CBC1257263. Features may be plan specific and vary. Please consult a Sales Associate for specific feature information. All new ICI Homes come with a HBW 2-10 warranty. Certain elevations may have additional fees. Prices may not include lot premiums, upgrades, and options. Inventory home completion date may vary. All prices subject to change without notice. All plans are property of ICI Homes and cannot be copied or used without permission. Prices, promotions, incentives, features, options, amenities, floor plans, elevations, site maps, designs, materials, and dimensions are for illustrative purposes only and subject to change without notice. Plans should not be relied upon as representation express or implied of final sizes, locations, features or dimensions. Square footage and dimensions are estimated and may vary from description. All HERS ratings and savings are calculated by a third party energy rating service. Actual savings will depend on a number of factors, including but not limited to daily activities, home maintenance practices, household size, use of appliances, lighting and internal climate control systems, lot orientation, and surrounding climate and weather conditions. Created on 05/20/2026: _____ Garage Orientation R / L: _____

